



KGEAR
Smart Audio Solutions

TRANSPORTATION FACILITIES | 2024 - v.1

TRANSPORTATION FACILITIES

POLE	5
CEILING	11
WALL	13
ACTIVE	17
POINT SOURCE	18
SOUND PROJECTORS	19
RECESSED	20



NORD

255 | 280 |
160 | 204 |

VERBODEN TOEGANG

57.1

160

REV

POLE822TG



Pole mount, bi-directional/dipole passive speaker with symmetrical dispersion, featuring two opposite horizontal 8x2" cone-driver "Pure Array Technology", with a selectable horizontal beam for maximum lateral sound attenuation.

The speaker is housed in a sturdy protective aluminum round body that includes the mounting bracket, and a built-in transformer working at 100V with 60-30-15 W taps and symmetrical dispersion.

In the vocal frequency range, the speaker assures a narrow horizontal coverage (10°) and wide vertical axis dispersion (120°) on both sides. IP66 rating. The paint color is grey for the body and black for the grille in front of the transducers.

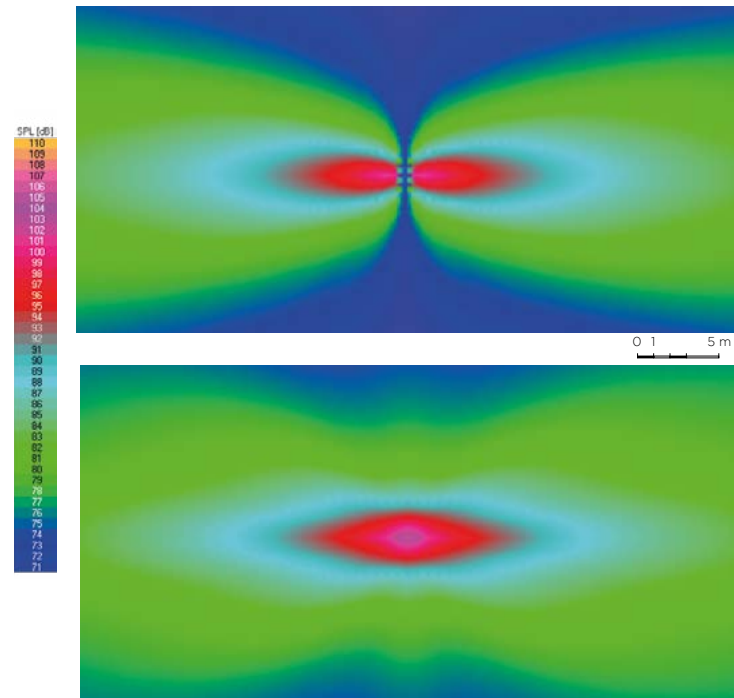
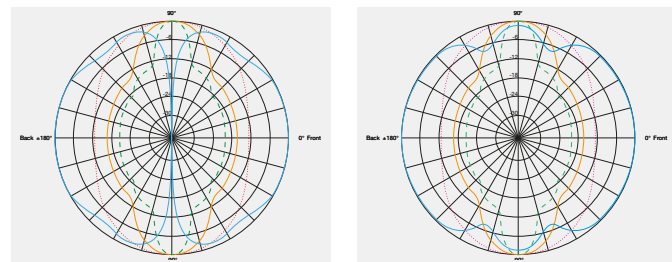
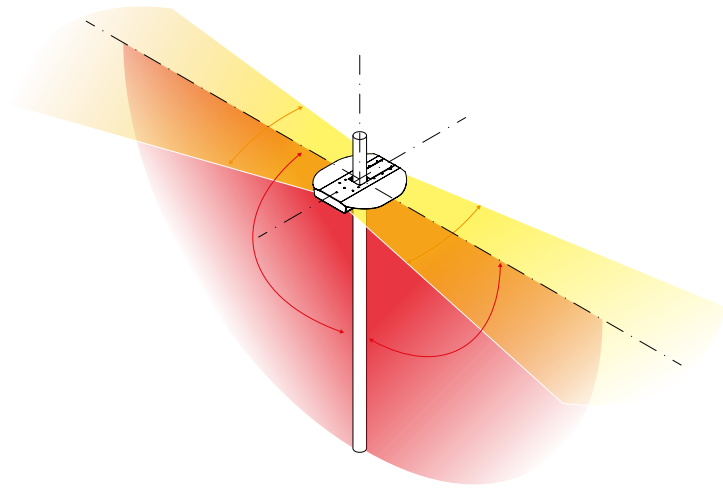
GENERAL

Type: Passive dipole Symmetrical loudspeaker
 Transducer: (8+8) x 2" ferrite magnet woofers (dipole line array emission)
 Frequency Response⁽¹⁾: 160Hz - 20 kHz (-10dB)
 Max SPL⁽²⁾: 114 dB (peak) (quarter space)
 Transformer Taps: 60W / 30W / 15W (100V) - 30W / 15W / 7,5W (70V)
 Rated Power: 2 x 120W
 Connectors: screw terminals
 Voice Coverage⁽³⁾: Dipole V. 10° I.H. 90°

PHYSICAL OVERVIEW

IP Rating: IP66
 Dimensions (WxLxH): 638 x 621 x 83 mm (25.1 x 24.4 x 3.3 in)
 Weight: 3,5 kg (7.7 lb)
 Material: Stainless Steel/ABS
 Color: Grey/Black

(1) - With dedicated preset
 (2) - Maximum SPL is calculated using a signal with crest factor 4 (12dB) measured at 8 m then scaled at 1 m
 (3) - Voice coverage is an average coverage measured over a range between 200 Hz and 8kHz



POLE



POLE422TG



Pole mount, bi-directional/dipole passive speaker with symmetrical dispersion, featuring two opposite horizontal 4x2" cone-driver "Pure Array Technology", with a selectable horizontal beam for maximum lateral sound attenuation.

The speaker is housed in a sturdy protective aluminum round body that includes the mounting bracket, and a built-in transformer working at 100V with 32W tap and symmetrical dispersion.

In the vocal frequency range, the speaker assures a narrow horizontal coverage (10°) and wide vertical axis dispersion (120°) on both sides. IP66 rating. The paint color is grey for the body and black for the grille in front of the transducers.

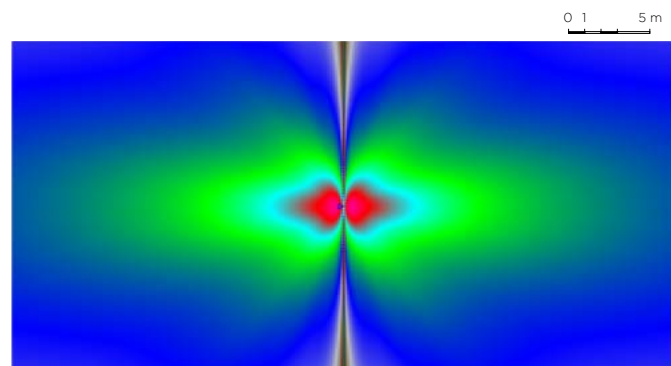
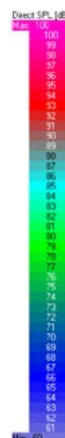
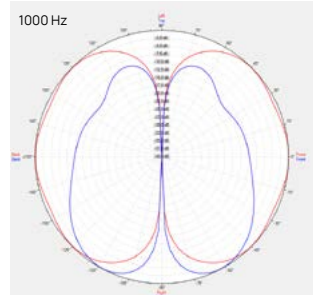
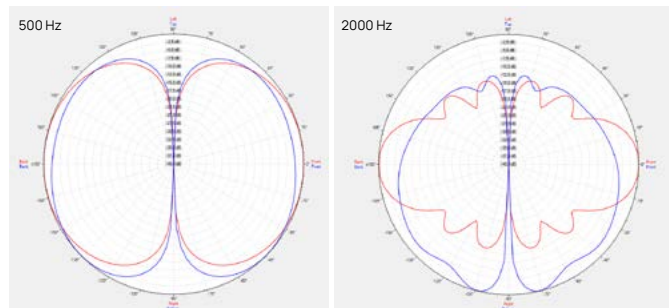
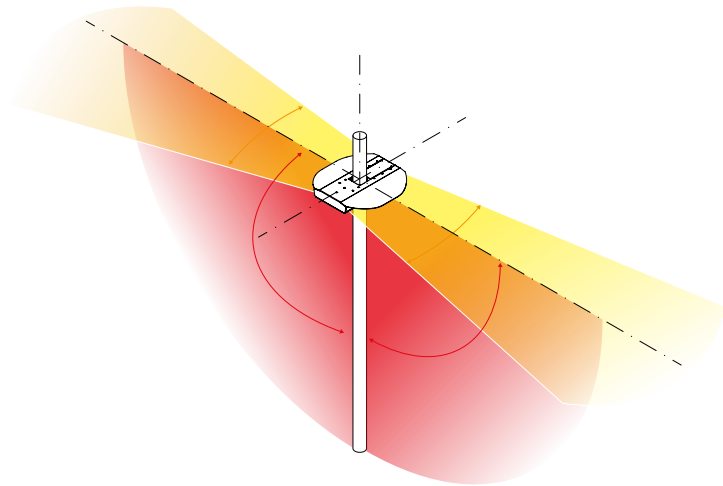
GENERAL

Type: Passive dipole Symmetrical loudspeaker
 Transducer: (4+4)x 2" ferrite magnet woofers (dipole line array emission)
 Frequency Response⁽¹⁾: 160Hz - 20 kHz (-10dB)
 Max SPL⁽²⁾: 107 dB (peak) (quarter space)
 Transformer Taps: 32W (100V) - 16W (70V)
 Rated Power: 2 x 64W
 Connectors: screw terminals
 Voice Coverage⁽³⁾: Dipole V. 90° | H. 15°

PHYSICAL OVERVIEW

IP Rating: IP66
 Dimensions (WxLxH): 491x352x83 mm (25.1x24.4x3.3 in)
 Weight: 3,5 kg (7.7 lb)
 Material: Stainless Steel/ABS
 Color: Grey/Black

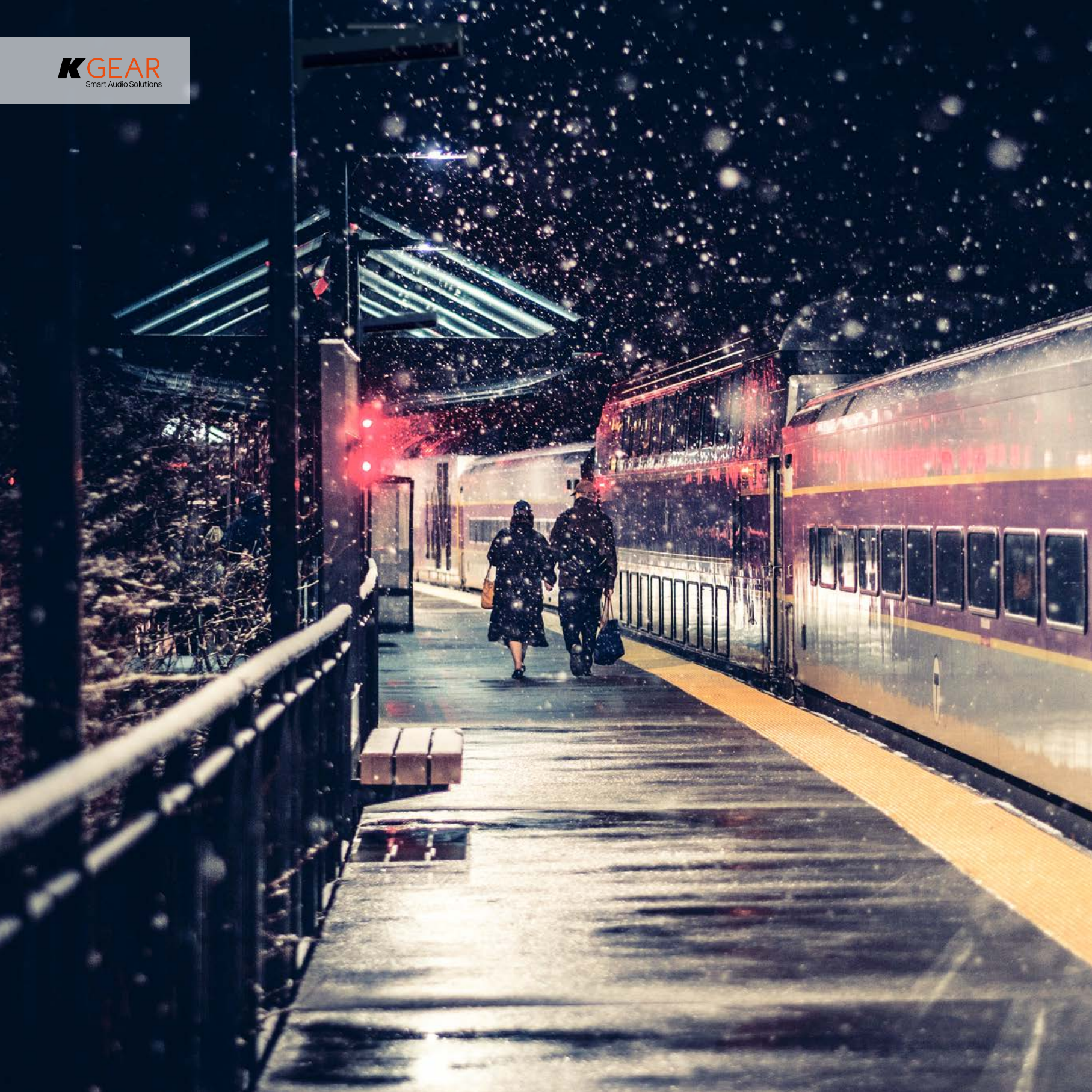
- (1) - With dedicated preset
 (2) - Maximum SPL is calculated using a signal with crest factor 4 (12dB) measured at 8 m then scaled at 1 m
 (3) - Voice coverage is an average coverage measured over a range between 200 Hz and 8kHz



POLE

KGEAR

Smart Audio Solutions



POLE82HTB I



POLE82HTW I



Pole mount, down-firing passive speaker, featuring one horizontal 8x2" cone-driver "Pure Array Technology" with protective housing structure and mounting bracket.

In the vocal frequency range, the speaker allows a 120° by 15° coverage. High pass filter at 160Hz. IP rating 66. Available in black or white.

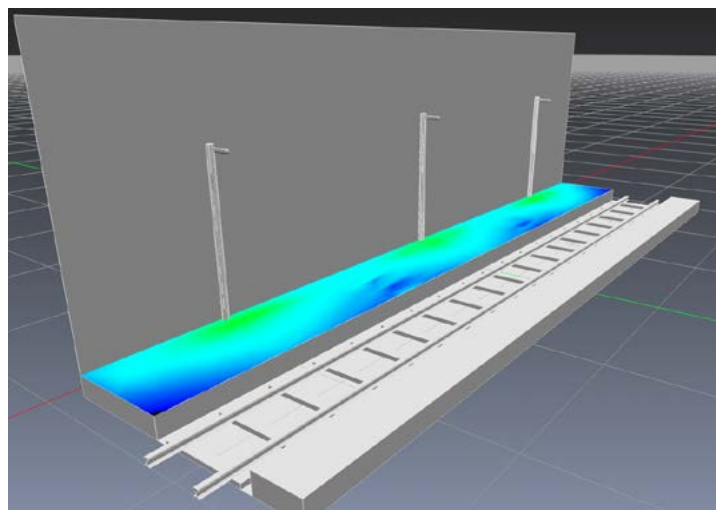
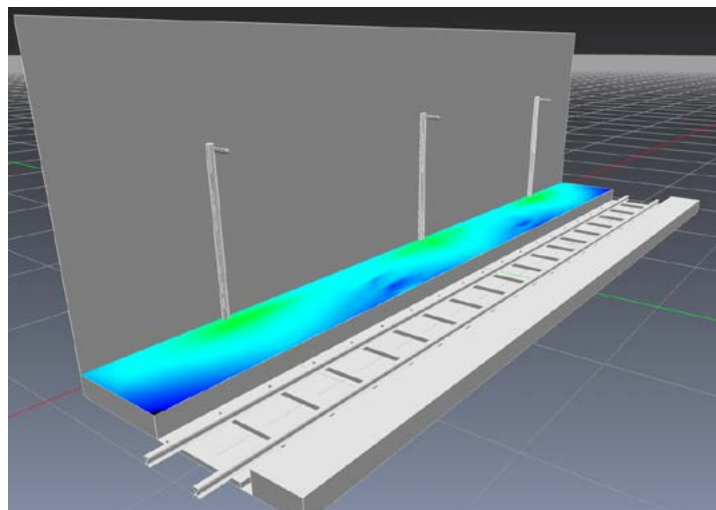
GENERAL

Type: Pole mount, down firing passive speaker
 Transducer: 8 x 2" ferrite magnet woofers
 Frequency Response⁽¹⁾: 160 Hz – 20 kHz (-10 dB)
 Max SPL⁽²⁾: 114 dB (peak) quarter space
 Transformer Taps: 32W / 16W / 8 W / 4W (100V) - 16W / 8W / 4W / 2W (70 V)
 Rated Power: 128W
 Connectors: screw terminals
 Coverage⁽³⁾: V. 90° | H. 15°

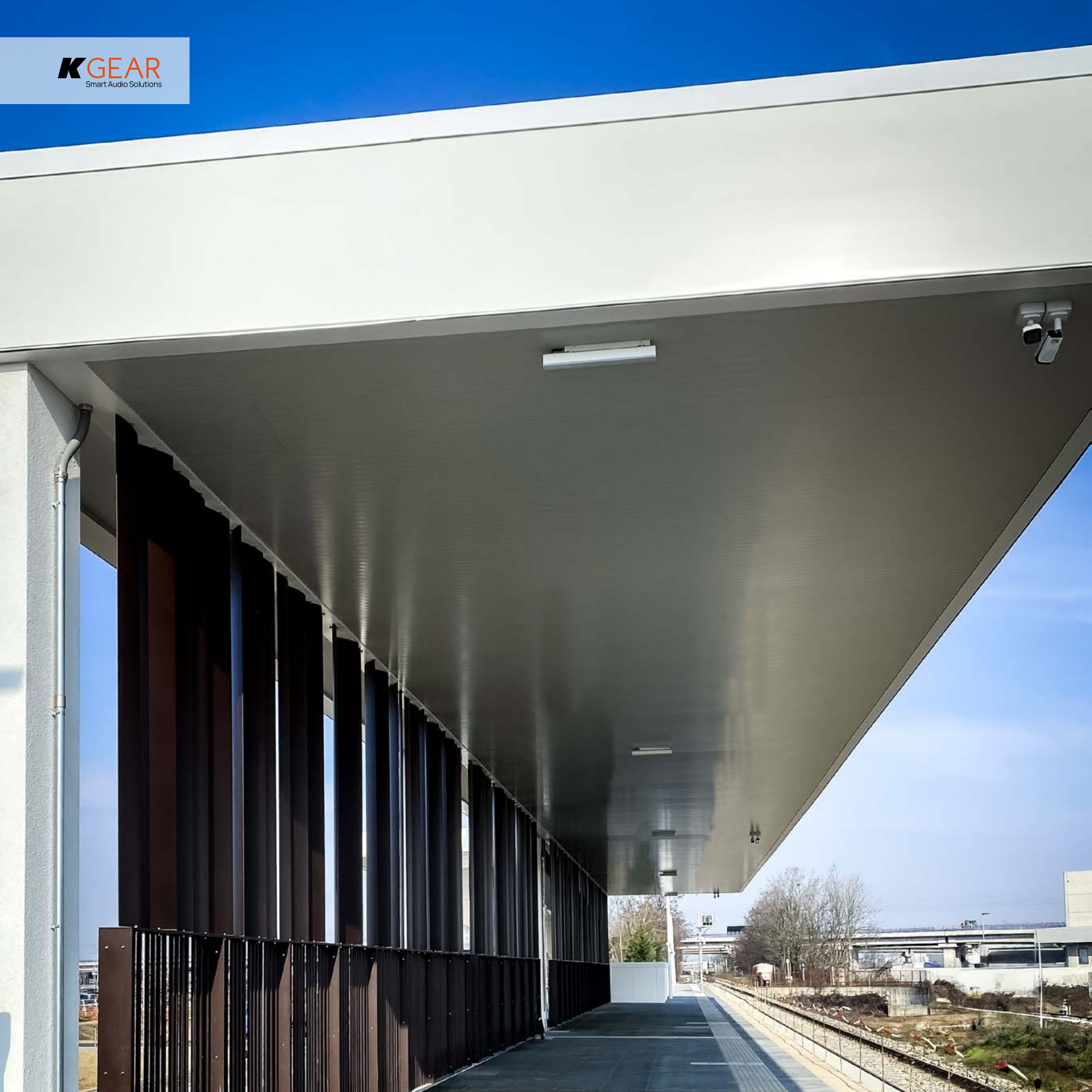
PHYSICAL OVERVIEW

IP Rating: IP66
 Dimensions (WxLxH): 200 x 640 x 73 mm (7.87 x 25.19 x 2.87 in)
 Weight: 5 kg (7.7 lb)
 Material: ABS
 Color: Grey/Black

(1) - With dedicated preset
 (2) - Maximum SPL is calculated using a signal with crest factor 4 (12dB) measured at 8 m then scaled at 1 m
 (3) - Voice coverage is an average coverage measured over a range between 200 Hz and 8kHz



POLE



CEIL42TB



CEIL42TW



Ceiling passive speaker with quick mount ceiling bracket, featuring one "Pure Array Technology" of 4x2" cone drivers and a built-in 100 V transformer with 16-8-4-2 W power taps. In the vocal frequency range, the speaker assures coverage of 120° x 25°. IP rating 65. Available in black or white.

GENERAL

Type: Passive loudspeaker with Transformer
 Transducer: 4 x 2" ferrite magnet woofer
 Frequency Response⁽¹⁾: 160 Hz - 20 kHz (-6dB)
 Max SPL⁽²⁾: 102 dB
 Transformer Taps: 16W / 8W / 4W / 2W (100V) - 8W / 4W / 2W / 1W (70V)
 Rated Power: 64W
 Connectors: 1x Phoenix connector (5-pin Euroblock)
 Coverage⁽³⁾: V.25° | H.90°

PHYSICAL OVERVIEW

IP Rating: IP55 with G-IPCAP2 accessory included
 Dimensions (WxLxH): 60 x 300 x 72 mm (2.36 x 11.81 x 2.83 in)
 Weight: 1.3 kg (2.87 lb)
 Material: ABS / Stainless Steel
 Color: Black - White (WALL42TB-WALL42TW)

- (1) - With dedicated preset
 (2) - Maximum SPL is calculated using a signal with crest factor 4 (12dB) measured at 8 m then scaled at 1 m
 (3) - Voice coverage is an average coverage measured over a range between 200 Hz and 8kHz

CEIL82TB



CEIL82TW



Ceiling passive speaker with quick mount ceiling bracket, featuring one "Pure Array Technology" of 8x2" cone drivers and a built-in 100 V transformer with 32-16-8-4 W power taps. In the vocal frequency range, the speaker assures coverage of 120° x 15°. IP rating 65. Available in black or white.

GENERAL

Type: Passive line array loudspeaker with transformer
 Transducer: 8 x 2" ferrite magnet woofer
 Frequency Response⁽¹⁾: 150 Hz - 20 kHz (-6dB)
 Max SPL⁽²⁾: 109 dB Peak
 Transformer Taps: 32W / 16W / 8W / 4W (100V) - 16W / 8W / 4W / 2W (70V)
 Rated Power: 128W
 Connectors: 1 x Phoenix 1,5/5-ST-3,81 compatible (5 -pin euroblock)
 Coverage⁽³⁾: V.15 | H.90°

PHYSICAL OVERVIEW

IP Rating: IP55 with G-IPCAP2 accessory included
 Dimensions (WxLxH): 60 x 604 x 100 mm (2.36 x 23.70 x 3.93 in)
 Weight: 2,8 kg (6.17 lb)
 Material: ABS / Stainless Steel
 Color: Black - White (WALL82TB-WALL82TW)

- (1) - With dedicated preset
 (2) - Maximum SPL is calculated using a signal with crest factor 4 (12dB) measured at 8 m then scaled at 1 m
 (3) - Voice coverage is an average coverage measured over a range between 200 Hz and 8kHz

WALL42TB**WALL42TW**

Passive speaker for either wall or ceiling mount including two L brackets, featuring one "Pure Array Technology" of 4x2" cone drivers and a built-in 100 V transformer with 16-8-4-2 W power taps.

In the vocal frequency range, the speaker assures coverage of 120° x 25°. IP rating 65. Available in black or white.

GENERAL

Type: Passive loudspeaker with Transformer
Transducer: 4 x 2" ferrite magnet woofer
Frequency Response⁽¹⁾: 160 Hz - 20 kHz (-6dB)
Max SPL⁽²⁾: 102 dB
Transformer Taps: 16W / 8W / 4W / 2W (100V) - 8W / 4W / 2W / 1W (70V)
Rated Power: 64W
Connectors: 1 x Phoenix connector (5-pin Euroblock)
Coverage⁽³⁾: V.25° H.90°

PHYSICAL OVERVIEW

IP Rating: IP55 with G-IPCAP2 accessory included
Dimensions: 60 x 340 x 66 mm (2,36 x 13,4 x 2,6 in)
(brackets not included in the measures)
Weight: 1.3 kg (2.87 lb)
Material: ABS
Color: Black - White (WALL42TB-WALL42TW)

(1) - With dedicated preset

(2) - Maximum SPL is calculated using a signal with crest factor 4 (12dB) measured at 8 m then scaled at 1 m

(3) - Voice coverage is an average coverage measured over a range between 200 Hz and 8kHz

WALL82TB

WALL82TW



Passive speaker for either wall or ceiling mount including two L brackets, featuring one "Pure Array Technology" of 8x2" cone drivers and a built-in 100 V transformer with 32-16-8-4 W power taps. In the vocal frequency range, the speaker assures coverage of 120° x 15°. IP rating 65. Available in black or white.

GENERAL

Type: Passive line array loudspeaker with transformer
 Transducer: 8 x 2" ferrite magnet woofer
 Frequency Response⁽¹⁾: 150 Hz - 20 kHz (-6dB)
 Max SPL⁽²⁾: 109 dB Peak
 Transformer Taps: 32W / 16W / 8W / 4W (100V) - 16W / 8W / 4W / 2W (70V)
 Rated Power: 128W
 Connectors: 1 x Phoenix 1,5/5-ST-3,81 compatible (5 -pin euroblock)
 Coverage⁽³⁾: V.15 | H.90°

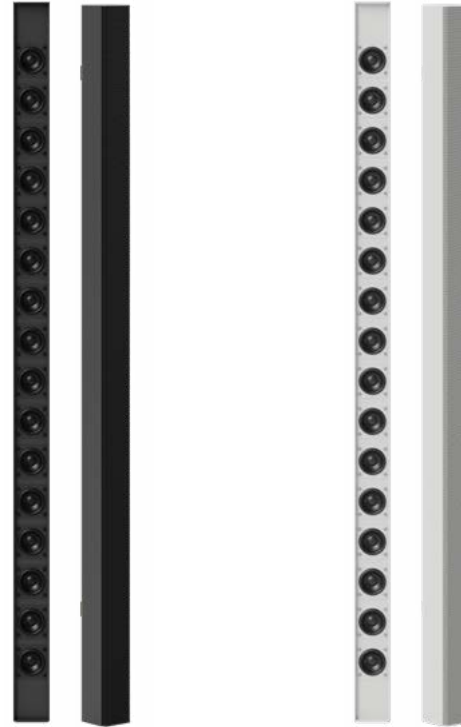
PHYSICAL OVERVIEW

IP Rating: IP55 with G-IPCAP2 accessory included
 Dimensions: 60 x 600 x 65 mm (2,36 x 23,62 x 2,56 in)
 (brackets not included in the measures)
 Weight: 2.2 kg (4.85 lb)
 Material: ABS
 Color: Black - White (WALL82TB-WALL82TW)

(1) - With dedicated preset
 (2) - Maximum SPL is calculated using a signal with crest factor 4 (12dB) measured at 8 m then scaled at 1 m
 (3) - Voice coverage is an average coverage measured over a range between 200 Hz and 8kHz

WALL162TB

WALL162TW



Passive speaker for either wall or ceiling mount including two L brackets, featuring one "Pure Array Technology" of 16x2" cone drivers and a built-in 100 V transformer with 64-32-16-8 W power taps. In the vocal frequency range, the speaker assures coverage of 120° x 7°. IP rating 65. Available in black or white.

GENERAL

Type: Passive line array loudspeaker with transformer
 Transducer: 16 x 2" ferrite magnet woofer
 Frequency Response⁽¹⁾: 135 Hz - 20 kHz (-6dB)
 Max SPL⁽²⁾: 115 dB Peak
 Transformer Taps: 64W / 32W / 16W / 8W (100V) - 32W / 16W / 8W / 4W (70V)
 Rated Power: 256W
 Connectors: 1 x Phoenix connector (5-pin Euroblock)
 Coverage⁽³⁾: V.7 | H.90°

PHYSICAL OVERVIEW

IP Rating: IP55 with G-IPCAP2 accessory included
 Dimensions: 60 x 1200 x 66 mm (2,36 x 47,24 x 2,56 in)
 (brackets not included in the measures)
 Weight: 4.2 kg (9.25 lb)
 Material: ABS
 Color: Black - White (WALL162TB-WALL162TW)

(1) - With dedicated preset
 (2) - Maximum SPL is calculated using a signal with crest factor 4 (12dB) measured at 8 m then scaled at 1 m
 (3) - Voice coverage is an average coverage measured over a range between 200 Hz and 8kHz

KGEAR

Smart Audio Solutions



WALL822TB



WALL822TW



Wall mount bi-directional / dipole passive speaker with asymmetrical dispersion, featuring two unmovable-tilt horizontal 8x2" cone-driver "Pure Array Technology", included wall bracket, a selectable horizontal beam for maximum lateral sound attenuation and an onboard transformer working at 100V with 60-30-15-7.5 W power taps. In the vocal frequency range, the speaker assures a wide horizontal coverage (120°) and wide vertical axis dispersion (10°) on both sides. IP rating 65. Available in black or white.

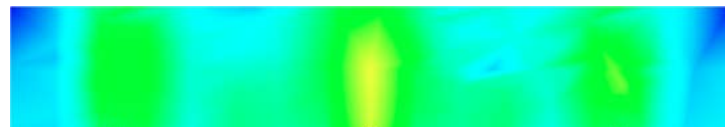
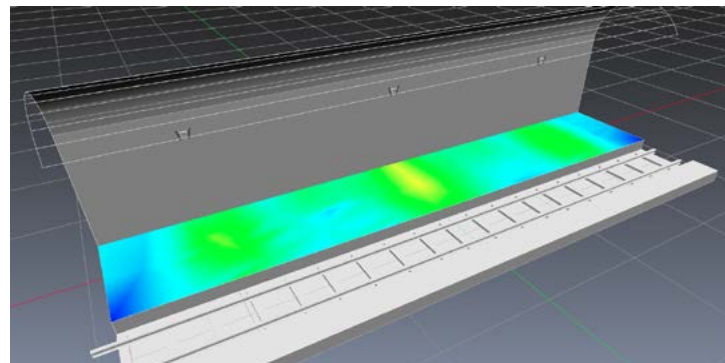
GENERAL

Type: Passive dipole/bidirectional asymmetrical speaker
 Transducer: (8+8) x 2" ferrite magnet (dipole line array emission)
 Frequency Response⁽¹⁾: 160 Hz – 20 kHz (-10 dB)
 Max SPL⁽²⁾: 114 dB (peak) quarter space
 Transformer Taps: 60 W / 30 W / 15 W (100V) - 30 W / 15 W / 7.5 W (70 V)
 Rated Power: 2 x 120W
 Connectors: screw terminals
 Vocal Coverage⁽³⁾: Dipole V. 90° | H. 10°

PHYSICAL OVERVIEW

IP Rating: IP66
 Dimensions (WxLxH): 600 x 550 x 104 mm (24 x 19.68 x 4.10 in)
 Weight: 4.6 kg (10.14 lbs)
 Material: ABS / Stainless Steel
 Color: Black - White (WALL822TB - WALL822TW)

(1) - With dedicated preset
 (2) - Maximum SPL is calculated using a signal with crest factor 4 (12dB) measured at 8 m then scaled at 1 m
 (3) - Voice coverage is an average coverage measured over a range between 200 Hz and 8kHz



WALL



ACT42B



ACT42W



Active speaker for either wall or ceiling mount including two L brackets, featuring "Pure Array Technology" of 4x2" cone drivers and a built-in 25 W power amplifier.

In the vocal frequency range the speaker assures a coverage of 120° x 25°. Available in black or white.

GENERAL

Type: Active

Power handling: 25 Watt

Transducer: 4 x 2" ferrite magnet woofers

Frequency Response⁽¹⁾: 160 Hz – 20 kHz (-10 dB)

Max SPL⁽²⁾: 108 dB (peak)

Coverage⁽³⁾: 120° | 25°

PHYSICAL OVERVIEW

Power: external 24V

Dimensions (WxLxH): 60 x 340 x 100 mm (2.36 x 13.38 x 3.93 in)

Weight: 1,9 kg (4,2 lb)

Material: ABS

Color: Black (ACT42B) | White (ACT42W)

(1) - With dedicated preset

(2) - Maximum SPL is calculated using a signal with crest factor 4 (12dB) measured at 8 m then scaled at 1 m

(3) - Voice coverage is an average coverage measured over a range between 200 Hz and 8kHz

POINT4B



POINT4W



4" full-range, two-way, wall mount, point source speaker, with front protection grille, featuring built-in 100V transformer with 20-10 W power taps. Wall bracket included.

Coverage angle 90°. Available in black or white.

GENERAL

Type: Point source - two-way full range loudspeaker
 Transducer: 4" ferrite magnet woofer + 1" tweeter
 Frequency Response⁽¹⁾: 110 Hz - 20 kHz (-6dB)
 Max SPL⁽²⁾: 108 dB (peak)
 Transformer Taps: 40W / 30W / 20W / 10W (100V) - 20W / 15W / 10W / 5W (70V)
 Rated Power: 80 W (peak) - @Low Z - 8Ω
 Connectors: screw terminals
 Coverage⁽³⁾: V.90° | H.90°
 Impedance: 8Ω/70V - 100V with impedance selector switch

PHYSICAL OVERVIEW

Dimensions: 150 x 244 x 150 mm (5.90 x 9.61 x 5.90 in)
 Weight: 1.8 kg (3.97 lb)
 Material: ABS
 Color: Black - White (POINT4B-WPOINT4W)

(1) - With dedicated preset

(2) - Maximum SPL is calculated using a signal with crest factor 4 (12dB) measured at 8 m then scaled at 1 m

(3) - Voice coverage is an average coverage measured over a range between 200 Hz and 8kHz

POINT6B



POINT6W



6" full-range, two-way, wall mount, point source speaker, with front protection grille, featuring built-in 100V transformer with 20-10 W power taps. Wall bracket included.

Coverage angle 90°. Available in black or white.

GENERAL

Type: Point source - two-way full range loudspeaker
 Transducer: 6" ferrite magnet woofer + 1" tweeter
 Frequency Response⁽¹⁾: 90Hz - 20KHz (-6dB)
 Max SPL⁽²⁾: 114 dB (peak)
 Transformer Taps: 40W / 30W / 20W / 10W (100V) - 20W / 15W / 10W / 5W (70V)
 Rated Power: 80 W (peak) - @Low Z - 8Ω
 Connectors: screw terminals
 Coverage⁽³⁾: V.90° | H.90°
 Impedance: 8Ω/70-100V with impedance selector switch

PHYSICAL OVERVIEW

Dimensions: 220 x 320 x 220 mm (8.66 x 12.6 x 8.66 in)
 Weight: 3 kg (6.61 lb)
 Material: ABS
 Color: Black - White

(1) - With dedicated preset

(2) - Maximum SPL is calculated using a signal with crest factor 4 (12dB) measured at 8 m then scaled at 1 m

(3) - Voice coverage is an average coverage measured over a range between 200 Hz and 8kHz

SPROJ5TW

One-way, sound projector in ABS, featuring onboard transformer working at 100V with 10-5-2.5W power taps. Water resistant 5" woofer. Waterproof cable gland. Aluminum grille. Stainless steel bracket. IP rating 55. Available in white.



GENERAL

Type: one-way passive sound projector with built-in transformer
 Transducer: 5" ferrite magnet woofer
 Frequency Response⁽¹⁾: 130 Hz - 17 kHz (-10dB)
 Max SPL⁽²⁾: 104 dB (peak)
 Transformer Taps: 10W / 5W / 2.5W (100V) - 5W / 2.5W / 1.25W (70V)
 Rated Power: 20W
 Connectors: screw terminals
 Coverage⁽³⁾: 130° conical
 Impedance: 8Ω/70V - 100V with impedance selector switch

PHYSICAL OVERVIEW

IP Rating: IP65
 Dimensions: 162 x 138 x 204 mm (6,3 x 5,4 x 8 in)
 Weight: 1.7 kg (3.96 lb)
 Material: ABS
 Color: White - SPROJ5TW

(1) - With dedicated preset
 (2) - Maximum SPL is calculated using a signal with crest factor 4 (12dB) measured at 8 m then scaled at 1 m
 (3) - Voice coverage is an average coverage measured over a range between 200 Hz and 8kHz

SPROJ52TW bi-directional

Two-way sound projector in aluminum, featuring built-in 100V transformer with 10-5-2.5W power taps. 2x water resistant 5" woofers. Waterproof cable gland. Aluminum grille. Stainless steel bracket. IP rating 55. Available in white.



GENERAL

Type: two-way passive sound projector with built-in transformer
 Transducer: 2 x 5" ferrite magnet woofers
 Frequency Response⁽¹⁾: 130 Hz - 17 kHz (-10dB)
 Max SPL⁽²⁾: 104 dB (peak)
 Transformer Taps: 10W / 5W / 2.5W (100V) - 5W / 2.5W / 1.25W (70V)
 Rated Power: 20W
 Connectors: screw terminals
 Coverage⁽³⁾: 130° conical
 Impedance: 8Ω/70V - 100V

PHYSICAL OVERVIEW

IP Rating: IP65
 Dimensions: 167 x 136 x 210 mm (6.5 x 5.3 x 8.2 in)
 Weight: 1.8 kg (3.97 lb)
 Material: Aluminum
 Color: White - SPROJ5TW

(1) - With dedicated preset
 (2) - Maximum SPL is calculated using a signal with crest factor 4 (12dB) measured at 8 m then scaled at 1 m
 (3) - Voice coverage is an average coverage measured over a range between 200 Hz and 8kHz

REC3CB-T



REC3CW-T



Round speaker for either in-wall or in-ceiling mount, consisting of a 3" coaxial cone and an external 100 V transformer box with 16-8-4-2 W power taps. 130° wide coverage. ABS chassis and stainless steel round protection grille painted in white or black.

GENERAL

Type: Passive
 Transducer: 3" ferrite magnet woofers
 Rated Power (100 V line): 16W, 8W, 4W, 2W Taps (External transformer)
 Rated Power (70 V line): 8W, 4W, 2W, 1W Taps (External transformer)
 Frequency Response⁽¹⁾: 130 Hz – 20 kHz (-10 dB)
 Max SPL⁽²⁾: 104dB (peak)
 Coverage⁽³⁾: V. 130° conical

PHYSICAL OVERVIEW

Dimensions: Ø outer 116 mm (4.57 in) | Ø inner: 100 mm (4 in)
 Weight: 0.4 kg (0.88 lb)
 Material: ABS
 Color: Black (REC3CB-T) | White (REC3CW-T)

(1) - With dedicated preset

(2) - Maximum SPL is calculated using a signal with crest factor 4 (12dB) measured at 8 m, then scaled at 1 m

(3) - Voice coverage is an average coverage measured over a range between 200 Hz and 8kHz

REC3WB-T



REC3WW-T



Square speaker for either in-wall or in-ceiling mount, consisting of a 3" coaxial cone and an external 100 V transformer box with 16-8-4-2 W power taps. 130° wide coverage. ABS chassis and stainless steel square protection grille painted in white or black.

GENERAL

Type: Passive
 Transducer: 3" ferrite magnet woofers
 Rated Power (100 V line): 16W, 8W, 4W, 2W Taps (External transformer)
 Rated Power (70 V line): 8W, 4W, 2W, 1W Taps (External transformer)
 Frequency Response⁽¹⁾: 130 Hz – 20 kHz (-10 dB)
 Max SPL⁽²⁾: 104dB (peak)
 Coverage⁽³⁾: V. 130° conical

PHYSICAL OVERVIEW

Dimensions: Ø outer 116 mm (4.57 in) | Ø inner: 100 mm (4 in)
 Weight: 0.4 kg (0.88 lb)
 Material: ABS
 Color: Black (REC3WCB-T) | White (REC3WW-T)

(1) - With dedicated preset

(2) - Maximum SPL is calculated using a signal with crest factor 4 (12dB) measured at 8 m, then scaled at 1 m

(3) - Voice coverage is an average coverage measured over a range between 200 Hz and 8kHz

REC5TCB



REC5TCW



Round speaker for either in-wall or in-ceiling mount, 5.25" coaxial driver 0.75" titanium dome tweeter tilting and built-in 100 V transformer with 16-8-4-2 W power taps. 120° wide coverage. ABS chassis and stainless steel round protection grille painted in white or black.

GENERAL

Type: Passive
 Transducer: 5,25" coax ferrite magnet woofer
 0.75" titanium dome tweeter tilting
 Frequency range⁽¹⁾: 70 Hz - 20 kHz (±3dB)
 60 Hz - 20 KHz (±10dB)
 Power handling: 40 W | 80 W Peak Nominal impedance: 8 ohm
 Rated Power (100 V line): 16W, 8W, 4W , 2W Taps
 Rated Power (70 V line): 8W, 4W, 2W, 1W Taps
 Max SPL ⁽²⁾: 106dB (peak)
 Coverage⁽³⁾: V. 120° conical

PHYSICAL OVERVIEW

Dimension: Ø outer: 196 mm (7.7 in) | Ø inner: 179 mm (7 in)
 Depth: 75 mm (3 in)
 Weight: 1.08 kg (2.4 lb)
 Material: ABS
 Color: Black (REC5TCB) | White (REC5TCW)

(1) - With dedicated preset
 (2) - Maximum SPL is calculated using a signal with crest factor 4 (12dB) measured at 8 m then scaled at 1 m
 (3) - Voice coverage is an average coverage measured over a range between 200 Hz and 8kHz

REC5TWB



REC5TWW



Square speaker for either in-wall or in-ceiling mount, 5.25" coaxial driver 0.75" titanium dome tweeter tilting and built-in 100 V transformer with 16-8-4-2 W power taps. 120° wide coverage. ABS chassis and stainless steel round protection grille painted in white or black.

GENERAL

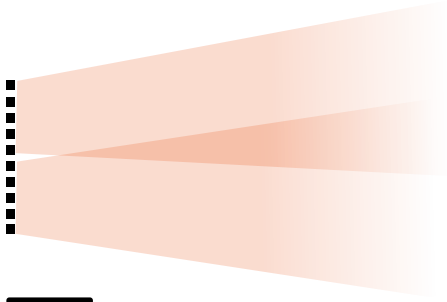
Type: Passive
 Transducer: 5,25" coax ferrite magnet woofer
 0.75" titanium dome tweeter tilting
 Frequency range⁽¹⁾: 70 Hz - 20 kHz (±3dB)
 60 Hz - 20 KHz (±10dB)
 Power handling: 40 W | 80 W Peak Nominal impedance: 8 ohm
 Rated Power (100 V line): 16W, 8W, 4W , 2W Taps
 Rated Power (70 V line): 8W, 4W, 2W, 1W Taps
 Max SPL ⁽²⁾: 106dB (peak)
 Coverage⁽³⁾: V. 120° conical

PHYSICAL OVERVIEW

Dimension: Ø outer: 196 mm (7.7 in) | Ø inner: 179 mm (7 in)
 Depth: 75 mm (3 in)
 Weight: 1.08 kg (2.4 lb)
 Material: ABS
 Color: Black (REC5TWB) | White (REC5TWW)

(1) - With dedicated preset
 (2) - Maximum SPL is calculated using a signal with crest factor 4 (12dB) measured at 8 m then scaled at 1 m
 (3) - Voice coverage is an average coverage measured over a range between 200 Hz and 8kHz

RECESSED



Pure
Array
Technology

Pure Array Technology

Composed of closely-spaced, full-range sound sources, all our line array elements feature our innovative Pure Array Technology (PAT).

With no drivers dedicated to the high frequencies, no bass reflex or passive radiators dedicated to the low end, there are no crossover points and a perfect phase response is achieved in both the near and far fields.

All the sound sources in the array are identical and perfectly coupled producing a true line array with benefit of having the sound beam radiated by the column very wide on the horizontal plane and very narrow on the vertical plane.

The amount of energy sent towards the ceiling and the floor is then minimized greatly improving the intelligibility in highly reverberant venues like houses of worship and conference rooms.

Furthermore, such a focused sound beam is able to cover a long distance uniformly. The audience located in front of the array and at the back of the venue will experience the same tonal balance without the need of several delay lines. With no horns and no waveguides, PAT columns can be joined to create longer arrays.

The longer the array, the narrower the sound beam and the further the distance that can be covered uniformly.



Visually Discreet

For architectural reasons, a visually discreet audio system may be required to integrate seamlessly with the layout without compromising sound quality.



Weather Resistant

We utilize the most durable and resistant materials when developing our products to protect and conserve the system regardless of the elements, rendering a KGEAR installation reliable and long-lasting.



Lightweight

We created a portfolio complete with lightweight products that are easy to transportation and quick to setup optimizing logistics, space, labor costs and time.

KGEAR
Smart Audio Solutions

www.kgear.it

