



New products 2024



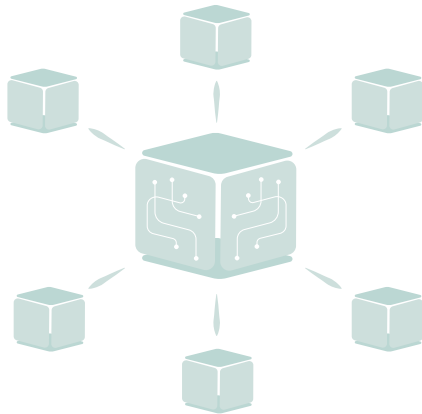
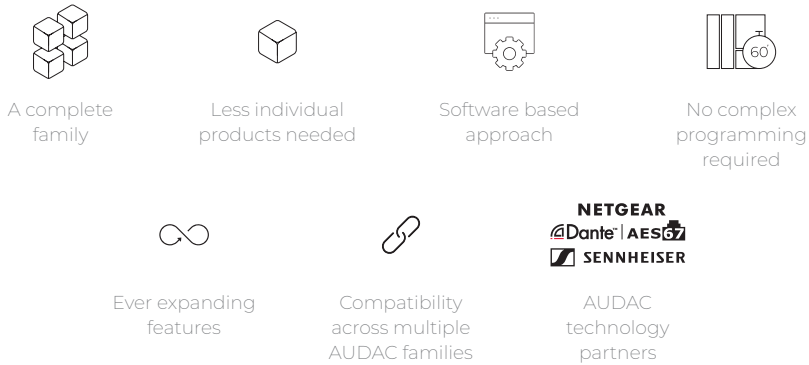
Index

AUDAC's families	<i>A brief overview of the AUDAC product families</i>	4
AUDAC Touch™	<i>Simplified design, management & system control platform</i>	10
VEXO1xx series	<i>High performance 2-way loudspeakers</i>	14
VEXO208	<i>Compact 8" high performance 3-way loudspeakers</i>	18
ATEOxM series	<i>In & outdoor surface mount loudspeaker with CleverMount+™</i>	22
CALI series	<i>SafeLatch™ ceiling speakers</i>	28
SCP series	<i>Compact dual-channel power amplifiers</i>	30
WP200	<i>Remote volume controller</i>	32
ARJ12P	<i>Junction box - RJ45 to 2 x 3-pin terminal block</i>	33

Atellio family

Networked sound & control

Imagine a flexible and scalable sound system. What if you could set up such a solution and control it with your custom dashboard in just a few minutes? It is time for an innovative approach and to make configurations simpler by designing them smarter, so you can do more with fewer products and in less time.

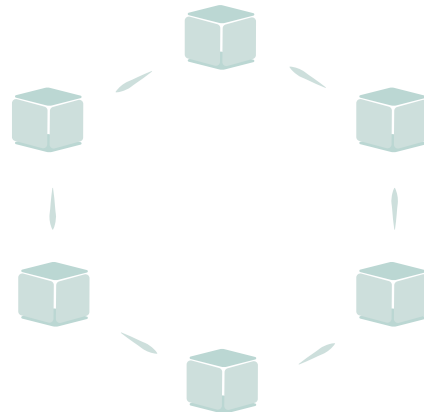


Centralized processing

Modularity, flexibility, and sustainability were the main criteria when starting the design process. Design a solution around a central processing approach by using one of our powerful matrix processors that stands out in ease of installation and great flexibility.

Decentralized processing

Yet you no longer must rely on a centralized approach for every solution, as every product is smarter and more powerful than before. Each member of the Atellio family has the necessary signal processing power and features, for use as a stand-alone solution.





Future release timeline

Emerging features on the horizon

Exciting updates await in the future of the AUDAC Atellio family! Brace yourself for an immersive audio adventure powered by cutting-edge features. Seamlessly connect with diverse devices through enhanced connectivity options, ensuring a versatile and hassle-free user experience.

Scan the QR code below to discover all new & upcoming features.



Simplified design, management & system control platform

At the heart of it all, you can find AUDAC Touch™, our total system control platform. With AUDAC Touch™, we offer the easiest way to set up a system and create custom user dashboards without even needing a single line of code. By dragging and dropping widgets, a dashboard can be made in a flick of a wrist without complex configuration.



Consenso family

Networked control

Innovative networked control and audio solutions for multi-zone audio applications, with AUDAC Touch™ at the heart of it all. A complete family of networked control matrices, relays, amplifiers, audio sources, and control units. Compatibility with network control panels, analog wall input panels, and analog wall controllers makes the Consenso family a versatile solution for any application.



Seamless and intuitive control experience



Compatibility across multiple AUDAC families



Dante™/AES67 compatibility for certain family members



Versatility, fast deployment, and ease of operation

With AUDAC Touch™ at the heart of it all, users can easily manage and customize their audio settings across multiple zones, whether it is a commercial space, conference room, or residential setting.

- ✓ Intuitive full system overview
- ✓ Easy controllability of your entire installation
- ✓ Smart widgets
- ✓ Live audio control & processing technology
- ✓ Over-the-air updates
- ✓ No programming skills needed



Soveno family

Non-networked sound & control

The simplicity of non-networked sound and control with timeless and elegant design forms the Soveno family. You can offer a compact solution with intuitive control, using a completely analog signal path without any network knowledge.



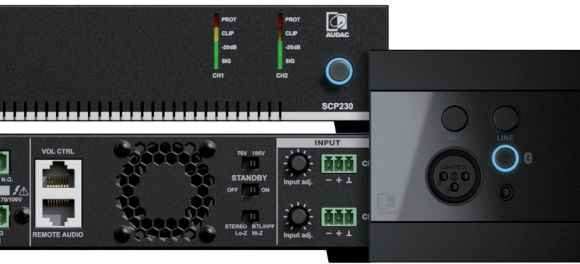
High-quality full analog audio signal path



Extended versatility with compatible analog wall inputs and controller



Installation convenience and user-friendly intuitive control

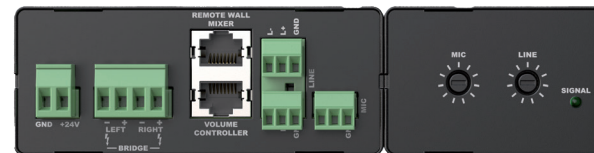


Extended versatility

With compatible analog wall inputs and controllers, the intuitive controls on the front side of the devices and compatibility with our analog wall controllers ensure a seamless audio experience that can be easily tailored to suit any environment.

Straightforward and intuitive design

Perfect choice for many commercial, and residential settings where they do not need to be part of a larger system that requires simple controls with a clear, intelligible, and dynamic sound.



AUDAC product families

An overview - Inspired by sound



Innovative sound products



Atellio family

Networked sound & control

- ✓ LUNA-F
- ✓ LUNA-U + ANM88
- ✓ NWP & NCP series
- ✓ AMP203
- ✓ SMA, SMQ & PMQ series + ANI44XT
- ✓ MFA series + ANI44XT
- ✓ XMP series + ANX44X
- ✓ VEXO A series + ANI44XT
- ✓ More to come...



Consenso family

Networked control

- ✓ MTX series
- ✓ ARU series
- ✓ MFA series
- ✓ M2
- ✓ XMP series
- ✓ AMP523
- ✓ APC100



Soveno family

Non-networked sound & control

- ✓ PRE series
- ✓ SCP, CEP & DPA series
- ✓ SMA, SMQ & PMQ series
- ✓ CAP series
- ✓ EPA & COM series
- ✓ ISP & TSP series
- ✓ AMP22
- ✓ AGP20, ATU44 & ALI20
- ✓ VEXO A series
- ✓ ARES5A
- ✓ IMEO2

Network control panels

- ✓ NCP series

Network mixing panels

- ✓ NWP series

Analogue wall inputs

- ✓ WP2xx, WLI, WMI & MWX series

Analogue wall inputs

- ✓ WP2xx series + 24V DC power supply (PSD24)

Network paging microphones

- ✓ NPM series

Analogue wall controllers

- ✓ VC & MWX series



AUDAC Touch™



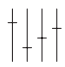
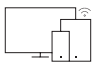
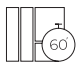
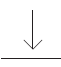
Velodroom Limburg | Heusden-Zolder, Belgium runs on AUDAC Atello family

AUDAC Touch™

Simplified design, management & system control platform

AUDAC strongly believes in out-of-your-pocket controllable audio solutions and further establishes its progressive position by developing the AUDAC Touch™ simplified design & system control platform. Using this freely available solution, application-specific dashboards can be created and customized, allowing the control of multiple devices from one single application.

Visit audac.eu/touch for more information.

-  Total system control
-  Automatic device discovery
-  Custom dashboards
-  Premium functionalities on demand
-  Freely downloadable



Technology partners

At AUDAC, we are committed to providing our customers with the best possible products and services. To do this, we work with a variety of technology partners to access a wider range of expertise and capabilities.



* Note that your national legislation may be different for your territory, check the website for more information.

Closed architecture

Open architecture



Empowering efficiency with intuitive control

Flexible architecture

In today's fast-paced world, the ability to quickly and efficiently manage AV equipment is more important than ever before. Therefore, we want to evolve from a closed architecture, not to a completely open one, but to a flexible settings panel. Predefined settings & routing in a fully customisable and controllable view.





User-friendly control dashboards

For end users

Imagine full control over your AV system from the palm of your hand. A user-friendly interface allows you to quickly switch between audio sources and adjust the volume to create the perfect atmosphere for any occasion.

Whether you're in a restaurant, hotel, or conference center, AUDAC Touch™ makes it easy to manage not only your audio system, but also third-party devices like beamers, lights or every device that is controllable over the network.

- ✓ Intuitive full system overview
- ✓ Easy controllability of your entire installation
- ✓ Non-AUDAC products control (third-party support)
- ✓ Licensed streaming (Spotify™ and Soundtrack Your Brand©)



Design, management & control

For integrators

As an integrator, you know that the success of any audio installation depends on your ability to control and manage the system with ease and precision. That's where AUDAC Touch™ comes in, offering intuitive control over AUDAC solutions and third-party equipment.

Easily design, manage & control your entire AV installation, and fine-tune the equalizer settings to achieve the perfect sound reproduction in all kinds of applications. Set up dashboards in minutes, no complex programming skills needed!

- Smart widgets ✓
- Live audio control & processing technology ✓
- Over-the-air updates ✓
- No programming skills needed ✓
- LUA scripting ✓
- AUDAC Touch™ emulator ✓



Premium licenses

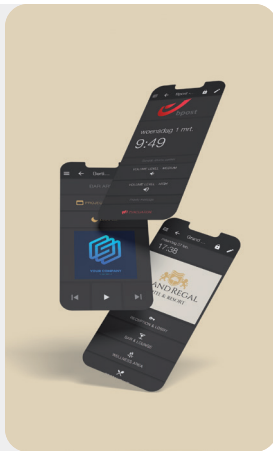
Enhance your AUDAC Touch™ experience

A variety of premium features that will enhance your experience and take your AUDAC Touch™ usage to the next level. While our free version provides a fantastic foundation, upgrading to premium gives you access to advanced features that will help you get the most out of our platform.

Find the expansion that is right for you

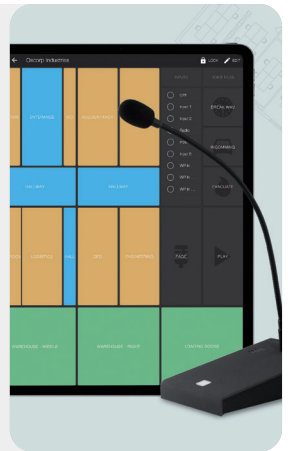
Enhance your Touch™ experience AUDAC Touch™ plus

- ✓ Ideal for end-users
- ✓ Additional functionalities
- ✓ More personalisation



Integrate your PA system AUDAC Touch™ page

- ✓ Direct paging control
- ✓ Custom zone selection
- ✓ Trigger & choose voice files
- ✓ Custom paging widgets



	AUDAC Touch™ plus	AUDAC Touch™ page
Clock widget	✓	
Play mode button	✓	
Fade volume button	✓	
Custom image widget	✓	
Input button	✓	
Mute multiple outputs	✓	
Open dashboard widget	✓	
Play voice file	✓	
Advanced text	✓	
Dynamic voice file picker		✓
Paging widget		✓
Virtual APM targets toggle		✓

VEXO1xx series

High performance 2-way loudspeakers

The VEXO1xx series are compact high performance 2-way loudspeakers and come in 4 different (active or passive) models. The low-frequency transducer, which is made out of high-quality materials, is combined with a 1.4" (VEXO108) or 1.7" (VEXO110, VEXO112 & VEXO115) voice coil compression driver, enabling high sound pressure levels and a tight driver response with a rotatable 90° x 70° coverage pattern for a wide range of applications.

Ω 8 Ohm | ⚡ 70-100 Volt



VEXO108

8" high performance 2-way loudspeaker

[No active version & carry handle]



VEXO110(A)

10" high performance 2-way (active) loudspeaker



VEXO112(A)

12" high performance 2-way (active) loudspeaker



VEXO115(A)

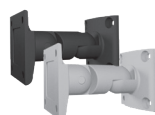
15" high performance 2-way (active) loudspeaker

Mounting made easy

A possible inclination of -90° to +35° ensures optimal positioning of the speakers. It is even possible to mount the VEXO1xx series to the ceiling which allows installing the loudspeaker cleanly in any environment. The cabinet is also fitted with a 35 mm pole adapter and ample rigging points.

Optional cover bag for VEXO110(A): [CPVX110](#)

Optional two-way revolving bracket for VEXO108: [MBK500](#)



*Optional MBK11xV
Clever U-bracket*



A complete range

Versatile 2-way loudspeakers in 4 models, boasting superior components for high sound levels, tight response, and flexible coverage, perfect for diverse applications.



Empowering clarity

This aspiration has inspired us to design a high performance 2-way loudspeaker that provides exceptional accuracy and clarity coming from this refined enclosure.

Optional 100V transformer

By removing the backplate with two slanted Speakon connectors and replacing it with a 70/100V backplate on which the module is integrated, the high-performance loudspeaker is able to be implemented in 70/100V systems.

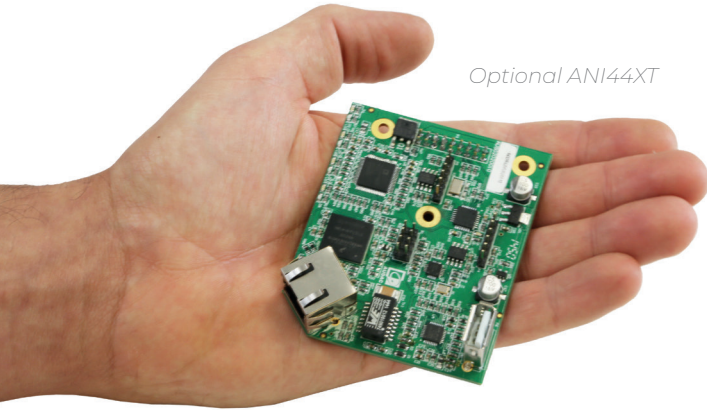
- TRM012 70/100V transformer module VEXO108 - 120W
- TRM124 70/100V transformer module VEXO110 - 240 & 120W
- TRM224 70/100V transformer module VEXO112 & VEXO115 - 240 & 120W
- TRM248 70/100V transformer module VEXO112 & VEXO115 - 480 & 240W



	Peak power	Program power	RMS/AES power	Max SPL @16Ω	Sensitivity 1W/1 m	Dispersion (Rotatable)	Impedance / Transformer (Optionally 70-100V)	Freq response +/- 3 dB	Dimensions	Weight
VEXO108	800W	400W	200W	118 dB	95 dB	90° x 70°	8 Ω / Yes	70 Hz - 20 kHz	244 x 425 x 256 mm	9.4 kg
VEXO110	1200W	600W	300W	121 dB	96 dB	90° x 70°	8 Ω / Yes	65 Hz - 20 kHz	329 x 540 x 345 mm	16.8 kg
VEXO110A	1200W	450W	300W	121 dB	96 dB	90° x 70°	8 Ω / No	65 Hz - 20 kHz	329 x 540 x 345 mm	18 kg
VEXO112	1600W	800W	400W	125 dB	99 dB	90° x 70°	8 Ω / Yes	58 Hz - 20 kHz	369 x 610 x 390 mm	22.4 kg
VEXO112A	1600W	600W	400W	125 dB	99 dB	90° x 70°	8 Ω / No	58 Hz - 20 kHz	369 x 610 x 390 mm	23.5 kg
VEXO115	2000W	1000W	500W	127 dB	100 dB	90° x 70°	8 Ω / Yes	50 Hz - 20 kHz	429 x 690 x 450 mm	28.1 kg
VEXO115A	2000W	750W	500W	127 dB	100 dB	90° x 70°	8 Ω / No	50 Hz - 20 kHz	429 x 690 x 450 mm	28.3 kg

VEXO1xx active series

Discover what this solution can do for your installation



Optional ANI44XT

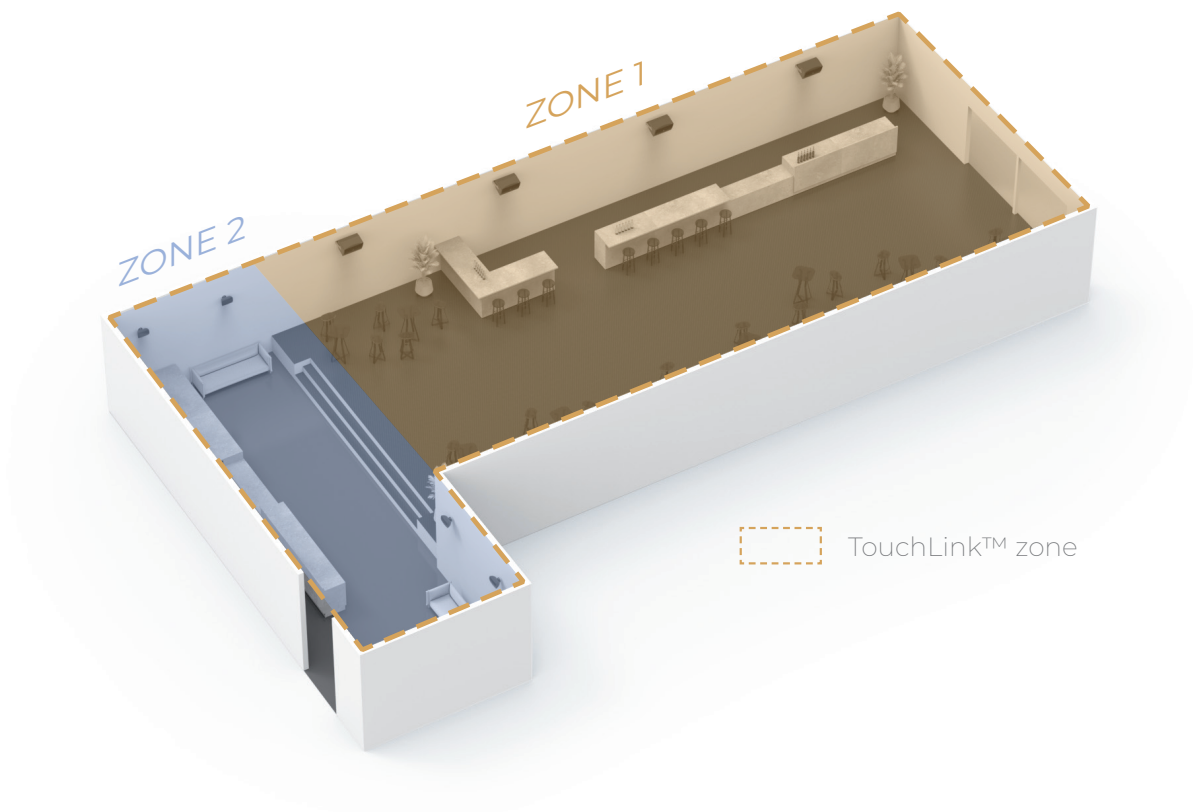


Unlock a world of possibilities

By installing the optional ANI44XT Dante™ audio network interface in the active version, you will be able to integrate the new VEXO1xx series into any Dante™ enabled AV network and transfer digital audio with any compatible solution on the market. Like this the VEXO1xx series will also become compatible with the NCP105 Universal network/PoE wall panel (see page 74).

TouchLink™ compatible

Used for creating virtual zones by linking multiple compatible devices with each other. In AUDAC Touch™ or directly on the device you can select multiple amplifier channels that should react to the user as one zone. By installing the ANI44XT the VEXO1xx series will be compatible with AUDAC Touch™ and TouchLink™.

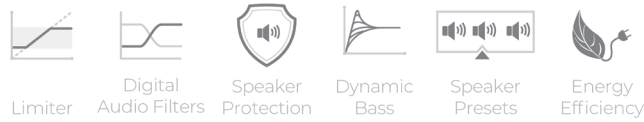


Controllability at your fingertips

A complete library of speaker presets is available for your projects, making it as easy as picking the right file, loading it & play! Besides the optimal acoustic configurations, this library also includes the loudspeaker performance parameters providing a bulletproof protection for your audio system.



AUDAC Touch™



WaveDynamics™ and integrated DSP processor

Thanks to its WaveDynamics™ compatibility and DSP processor, the audio control and processing technology enable any user to effortlessly control the most advanced acoustic configurations. The integrated DSP allows pre-sets for full-range, satellite and custom configurations and can be loaded via the USB slot on the back of the device. When not in use, the active versions of the VEXO1xx series devices automatically go into an energy-saving standby mode.



Energy-saving standby mode

Wall loudspeakers - High performance loudspeakers

VEXO208

Compact 8" high performance 3-way loudspeakers



The VEXO208 is a high-output 3-way loudspeaker, providing a powerful and detailed signature sound of the VEXO family with a dual 8-inch driver in a compact cabinet.

The combination of the elegant enclosure and high performance allows them to be used in installation applications that require both a modern look and a unique audio experience from nightclubs to sports facilities. Compression driver overload protection is provided through an internal limiting circuit. Mounting in both horizontal and vertical directions is possible with the included wall bracket. An optional 70/100V transformer module can be installed to use VEXO208 in Hi-Z systems.

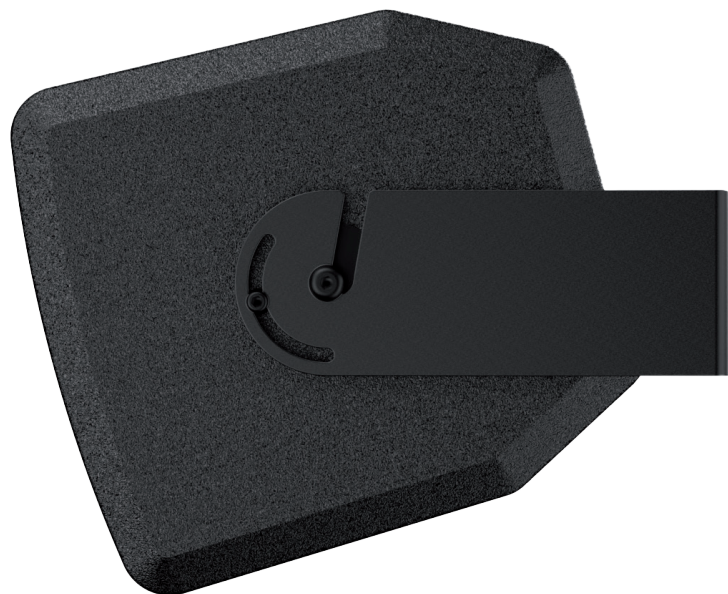
Ω 4 Ohm | ⚡ 70-100 Volt



Clever U-bracket

Included mounting accessories

Equipped with essential mounting accessories, featuring the clever U-bracket for flexible installation and a drop safety wire for added security. These included components ensure a hassle-free and secure mounting experience, enhancing the versatility of the VEXO208.





Connectivity made easy

By removing the backplate with two slanted Speakon connectors and replacing it with a 70/100V backplate on which the module is integrated, the high-performance loudspeaker is able to be implemented in 70/100V systems.

Powerful and detailed sound signature

Experience unparalleled audio excellence. These 3-way loudspeakers deliver an immersive auditory experience. Precision engineering and advanced technology harmonize to produce rich, dynamic sound, setting a new standard in audio performance.



	Peak power	Program power	RMS/AES power	Max SPL @16Ω	Sensitivity 1W / 1 m	Impedance / Transformer (Optionally 70-100V)	Freq response +- 3 dB	Dimensions	Weight
VEXO208	1600W	800W	400W	121 dB	94 dB	4 Ω / Yes	75 Hz - 20 kHz	710 x 260 x 290 mm	17 kg



A brief overview

Compare the VEXO series

Explore the VEXO series—four distinct models offering unparalleled audio experiences. From compact powerhouses to high-output performers, each boasts advanced features, ensuring superior sound quality for diverse needs.

	VEXO1xx	VEXO1xxA	VEXO208
Available Models	8", 10", 12" & 15"	10", 12" & 15"	8"
Speaker Type	2-way	2-way	3-way
Amplification	Passive	Active	Passive
Optional 70V/100V transformer module	Yes	No	Yes
Analog input	Yes	Yes	Yes
Optional Dante™/AES67 audio network interface	No	Yes	No
AUDAC Touch™ compability	No	with ANX44XT	No
TouchLink™ compatibility	No	with ANX44XT	No
Built-in DSP	No	Yes	No
Included mounting bracket	No	No	Yes
35 mm pole adapter	Yes	Yes	No
Bars & Restaurants	✓	✓	✓
Clubs	✓	✓	✓
Education	✓	✓	
Sporting facilities	✓	✓	✓
Concert venues	✓	✓	✓
Events	✓	✓	✓



ATEOxM series

In & outdoor surface mount loudspeaker with CleverMount+™

The ATEOxM series are extraordinary loudspeakers especially designed for fixed install in- & outdoor applications, ranging from modern residential applications to the most demanding designer applications in environments such as retail stores, pubs, restaurants or even clubs. Ensuring you an immersive true to-nature sound experience, thanks to the high quality components used and the wide dispersion (up to 130°) that can be achieved



ATEO4M

4" version with a 1" dome tweeter and a 4" Mid / Low-frequency driver, ensuring a true-to-nature, high-fidelity reproduction of music and speech, whilst maintaining an ultra-flat frequency response.

ATEO6M

6" version, with a 1" dome tweeter and a 6" Mid / Low frequency driver, ensuring a true-to-nature, high-fidelity reproduction of music and speech, whilst maintaining an ultra-flat frequency response.

Ω 8 Ohm | Ω 16 Ohm | ⚡ 70-100 Volt | ⚡ IP66 | ☔ Weatherproof | **WAGO**



- ✓ Unmatched sonic brilliance
- ✓ Unique CleverMount+™ mounting system
- ✓ Great installer convenience (WAGO conn.)
- ✓ Incline and rotatable in any direction
- ✓ Optional protective connection cover (WPMxx) & light track adapter mount (RMA45M)
- ✓ Marine grade build quality
- ✓ IP66 & 720h salt spray certification
- ✓ Hydrophobic cloth behind aluminum grill
- ✓ No wires or bracket visible from the back
- ✓ Optional incline mount (WMAxxM) & Cluster mount set (CMAixxM)

	Program power	RMS/AES power	Max SPL	Sensitivity 1W/1 m	Impedance	Power taps @ 100v	Power taps @ 70v	Freq response +- 3 dB	Dimensions
ATEO4M	70W	35W	101 dB	86 dB	8 Ω	24 / 12 / 6W	24 / 12 / 6 / 3W	100 Hz - 20 kHz	136 x 224 x 154 mm
ATEO4DM	70W	35W	101 dB	86 dB	16 Ω	-	-	100 Hz - 20 kHz	136 x 224 x 154 mm
ATEO6M	120W	60W	106 dB	89 dB	8 Ω	50 / 25 / 12.5W	50 / 25 / 12.5 / 6.25 W	65 Hz - 20 kHz	193 x 347 x 215 mm
ATEO6DM	120W	60W	101 dB	86 dB	16 Ω	-	-	65 Hz - 20 kHz	193 x 347 x 215 mm



Suited for every application

IP66

Weatherproof



Marine grade salt spray* and UV resistant

**720 Hours salt spray certified*



Unmatched sonic brilliance

All weather resistant

An optimized loudspeaker design with an aluminum grill with hydrophobic mesh, to achieve an IP66 rating. Thanks to its elegant ABS housing, ATEOXM is also salt spray and UV resistant.

New CleverMount+™ innovation

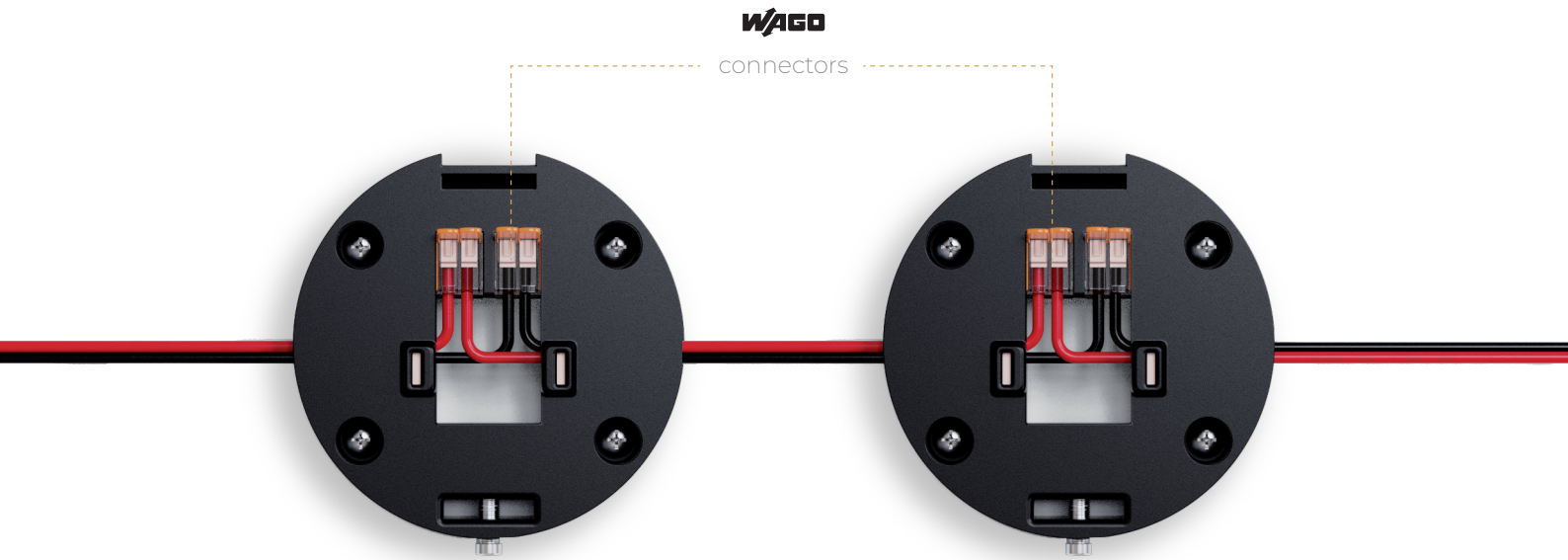
Thanks to the patented CleverMount+™ mounting technology these loudspeakers have the advantage of making the speaker cabinet flow together with the mounting bracket providing a great ease for installing the loudspeaker in one good-looking entity. A safe installation of the loudspeaker is acquired thanks to the separate bracket base.

CLICK



Great installer convenience

These design loudspeakers come with official WAGO connectors for the perfect high-quality and reliable electrical installation. WAGO connectors allow up to 4.0 mm² cable section. Great installer convenience is provided with the WAGO spring cage terminals, no additional tools are needed!



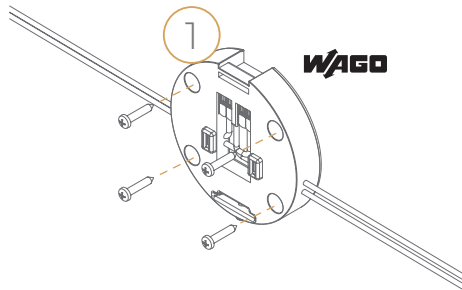
External power tap selection

Need to tweak the loudspeaker settings after installation? No problem, the ATEOxM has an integrated external power tap selector hidden on the rear. Easy and quick access in seconds!



Save up to 50% installation time

Effortless setup with full adjustability, no complex tools needed.



Install CleverMount+™ system

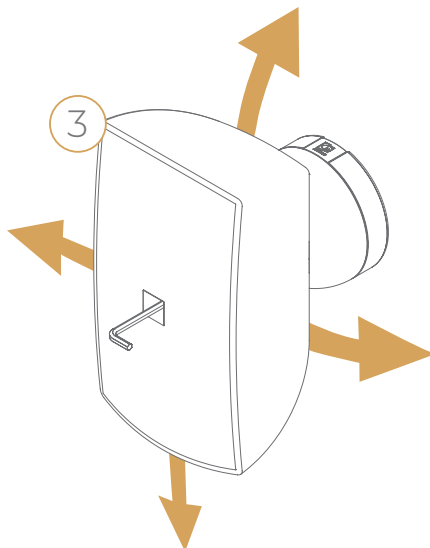
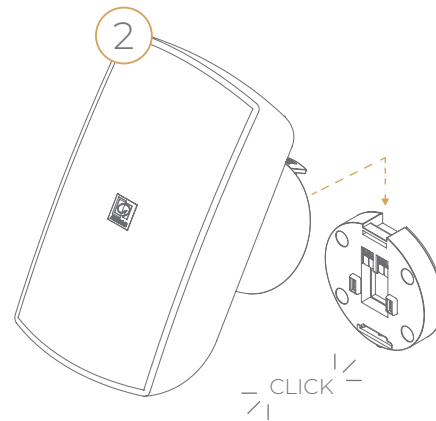
Begin by effortlessly affixing our supplied wall mount to your preferred spot on any wall. Our mount securely fastens with four screws, ensuring stability and durability. Levelling of the speaker can be done in step 3!

WAGO connectors handle up to 4.0 mm² cable section, ensuring a reliable and secure connection. Enjoy installer convenience with spring cage terminals, no extra tools required!

Attach speaker

ATEOxM has two connection latches on it and those connection latches should be placed to attachment points on CleverMount+™ mounting system.

When the mounting is done correctly, connecting blades of mounting system will be mated with ATEOxM and a clicking sound will be heard.



Choose the right angle

No levelling needed! Extremely firm fixation from front, allowing swift and accurate inclination. Elevate your experience by effortlessly customizing the placement to suit your unique preferences. With versatile mounting choices, achieving the perfect setup is a breeze, offering you unparalleled flexibility in creating the ideal environment.



A brief overview

Compare the ATEO series

Explore unparalleled sound in two exceptional choices. The ATEO series delivers exceptional audio performance in a compact design, while the ATEOxM series enhances versatility (in- & outdoor) with even faster installation times. Both series provide high-quality sound for various applications, offering a choice between streamlined simplicity and expanded functionality.



ATEOxM series



ATEO series

Available Models	4", 6"	4", 6"
Indoor Use	Yes	Yes
Outdoor use	Yes	No
Salt spray and UV resistant	Yes	No
IP Rating	IP66	-
Front Finish	Aluminium Grill with Hydrophobic Cloth	Steel grill
Speaker Type	Full Range	Full Range
Mounting System	Weatherproof CleverMount+™ with WAGO connectors	CleverMount™ with 6-pin Custom Terminal Block
Power Tap Selection	Hidden external power tap Selection	Power tap selection on mounting system
Max. conductor size	4 mm ²	1.5 mm ²
Pass-through connector	Yes (2 x positive / 2 x negative)	No
Power Ratings	Identical	
Dispersion	Identical	
SPL and Sensitivity	Identical	
Frequency Range	Identical	

Mounting accessories

ATEOxM series



RMA45M

Light track adapter mount- Smart 3-Phase Track - For ATEO4M

The RMA45M is an adapter for assembling ATEO4M loudspeakers on lighting track rails which are commonly used in installations such as retail environments. The angled construction offers optimal possibilities for inclination in any direction. A mechanical connection is provided, without having any electrical connection between the loudspeaker and the lighting track rail. It is compatible with smart 3-phase lighting track rails from most major brands including Eutrac, Staff, Nordic, Global, Ivela and Stucchi.

WMAxM series

Optional incline bracket

The WMA series incline bracket is specially designed for the ATEO4M speaker series. These brackets add an extra 30° angle to the already existing incline angle of ATEO speakers. This bracket opens the possibility to place the speaker horizontally or vertically at an angle up to 60° and ensures a perfect sound experience. The bracket extends the CleverMount+™ technology by complimenting the flow from the speaker cabinet to its bracket and maintaining the ease of installing the loudspeaker in one good-looking entity.

WMA40M : incline bracket for ATEO4M

WMA60M : incline bracket for ATEO6M



WMPxM series

Wall mount protection covers

The WMPxM are protective covers for the mounting and connection plates of the ATEOXM speakers. These protection covers are made out of synthetic rubber. They are being used as a protective cover to protect them when the interior is being painted, to avoid them to be reached by the paint. Due to their durable construction, they also can be used to protect the wall plates in outdoor applications when the speakers are removed off-season while the wall plates remain installed. This avoids dirt and humidity from reaching the critical parts.

WMP40M : Wall mount protection cover for ATEO4M

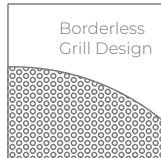
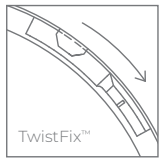
WMP60M : Wall mount protection cover for ATEO6M



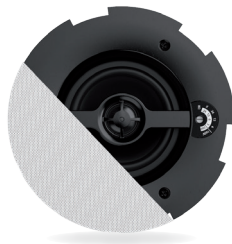
CALI series

SafeLatch™ ceiling speakers

Engineered for perfection. The CALI series range consists of full-range models constructed using premium materials and fitted with the patented SafeLatch™ mounting system. The TwistFix™ borderless grill design offers easy but solid assembly and a completely seamless transition from grill to ceiling. The construction with metal back-can guarantees premium performance under all circumstances, no matter what kind of ceiling or surface it is mounted to.



- ✓ Removable logos for most discrete use
- ✓ Ceiling speaker with rear dome

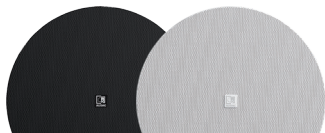


CALI424I

The CALI424I is a 2-way ceiling speaker with rear dome, constructed using a 4" cone driver, combined with an coaxially mounted 1" soft dome tweeter which is fitted with a phase plug for excellent off axis performance.

The 2-way construction combination with metal rear-dome guarantees premium performance for demanding applications. A continuous power handling of 30 Watt (RMS/AES) and program power handling of 60 watt is achieved, while fitted with a rotary switch for tapping of the 70/100V line transformer.

⚡ 70-100 Volt | Ω 8 Ohm



Outdoor front grills

for CALI4xx series speakers: [GLI05\(I\)](#)
for CALI6xx series speakers: [GLI06\(I\)](#)



CALI660I

The CALI660I is a 2-way ceiling speaker with rear dome, constructed using a 6.5" cone driver, combined with an coaxially mounted 1" soft dome tweeter which is fitted with a phase plug for excellent off axis performance.

The 2-way construction combination with metal rear-dome guarantees premium performance for demanding applications. A continuous power handling of 60 Watt (RMS/AES) and program power handling of 120 watt is achieved, while fitted with a rotary switch for tapping of the 70/100V line transformer.

⚡ 70-100 Volt | Ω 8 Ohm



Tile bridge

For installation in 60 x 60 cm suspended ceiling ceiling tiles applications.

for CALI4xx series speakers: [TBA40](#)
for CALI6xx series speakers: [TBA60](#)

	Program power	RMS/AES power	Sensitivity 1W/1m	Power taps @ 100V	Power taps @ 70V	Freq response +/- 3 dB	Cut-out dimensions	Dimensions
CALI424I	60 Watt	30 Watt	87 dB	24 / 12 / 6W	24 / 12 / 6 / 3W	93 Hz - 20 kHz	Ø 170 mm	Ø 192 mm x 114 mm
CALI660I	120 Watt	60 Watt	90 dB	60 / 30 / 15W	60 / 30 / 15 / 7.5W	90 Hz - 20 kHz	Ø 220 mm	Ø 242 mm x 124 mm

SafeLatch™

Unique innovation that gives the installer both hands available for directional placement and tightening of the fixation.



Position 1

Connect and insert the speaker with SafeLatch™ through the installation hole.

The latching arms will automatically lock the speaker in place.



Position 2

Fix the speaker in position by tightening the screws of the SafeLatch™ mounting system.



Position 3

Release the screws of the SafeLatch™ system to maximum for bending the latching arms inwards, which allows removal of the speaker.



New

Enhanced installation

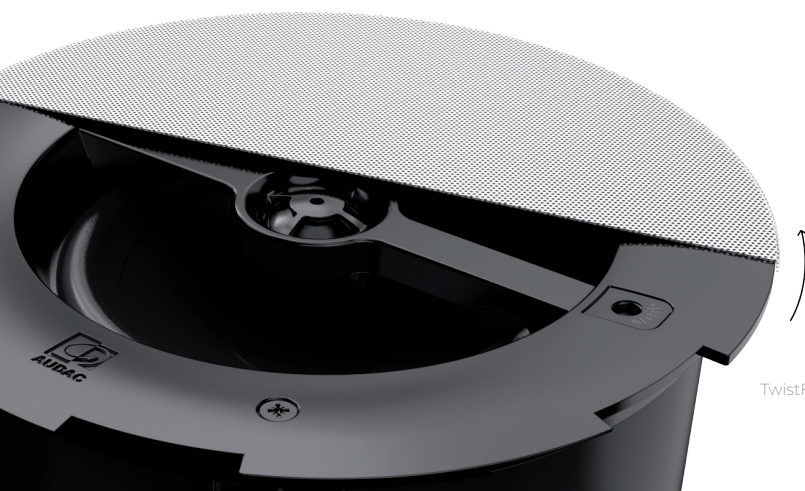
Connection can be done through a 'swivel' lid with conduit clamp. The rotating lid design, reminiscent of the market standards. A pluggable terminal block connector, simplifies the installation process, decreases the installation time and ensures a secure connection for seamless operation.

New

Crystal clear sound

We have re-engineered both the drivers and the internal filter (crossover) to achieve superior acoustical performance. A significant leap forward compared to its predecessor, resulting in an enriched and immersive audio experience.

- ✓ Increased driver sensitivity
- ✓ Optimised frequency response
- ✓ Tweaked internal filter (crossover)



TwistFix™ grill installation

SCP series

Compact dual-channel power amplifiers



The SCP series are a range of extremely powerful compact dual-channel power amplifiers for commercial use. These half 19" devices can be used in stereo low impedance or 70/100V bridge mode. There are 5 different models to serve a wide range of applications with power ratings that vary between 120W up to 1000W in a half 19" rack space housing.

The compact and elegant design of the half 19" rack space enclosure allows for single installation in a 10.5" equipment rack, or side-by-side (two devices) in a 19" equipment rack. Of course, desktop installation or mounting in an equipment rack using the MBS310 series mounting adapters is possible.

You may wonder if so much power in such a small enclosure could cause some heating issues? Not at all, the SCP series are designed in a unique way so that optimal cooling is established, this by passive cooling on the SCP206 and SCP212

and active cooling on the SCP224, SCP230 and SCP250 in order to improve thermal comfort without the need for additional actions.

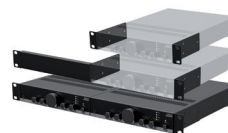
A connection to the WP2xx series input wall panels (see page 76) or volume controllers can be made via the RJ45 connector on the back of the SCP. This allows for a cost-effective plug & play solution to extend or introduce brand new input possibilities and control options.

Equipped with a standby mode switch, the SCP series will enter an energy-saving standby mode after a period of inactivity making him unique in the market. This feature together with the overall energy efficient design makes the SCP meet the high standards of the Energy star certification.

When you combine the SCP series with a suitable pre-amplifier or wall-mounted input panel you create a relatively powerful and complete solution for background music installations.

- ① Priority mute contact input
- ② Connection socket for external volume controller & remote input module
- ③ 70/100V, standby mode & stereo- BTL/HPF mode configuration

- ✓ Up to 1000W of power in a compact casing
- ✓ Plug-and-play compatible with WP2xx series
- ✓ Energy efficient standby mode



MBS310
Optional mounting bracket
(See page 193)

		Stereo @ 4 Ω	Bridge @ 70/100V	THD+N	Signal / Noise	Output voltage / Impedance	Dimensions	Weight
New	SCP206	2 x 60W	120W	< 0.5%	> 95 dB	100V / 70V / 4 Ω / 8 Ω	217.5 x 43.7 x 300 mm	2.99 kg
	SCP212	2 x 120W	240W	< 0.5%	> 95 dB	100V / 70V / 4 Ω / 8 Ω	217.5 x 43.7 x 300 mm	3.04 kg
	SCP224	2 x 240W	480W	< 0.5%	> 95 dB	100V / 70V / 4 Ω / 8 Ω	217.5 x 43.7 x 300 mm	3.10 kg
	SCP230	2 x 300W	600W	< 0.5%	> 95 dB	100V / 70V / 4 Ω / 8 Ω	217.5 x 43.7 x 300 mm	3.10 kg
New	SCP250	2 x 500W	1000W	< 0.5%	> 95 dB	100V / 70V / 4 Ω / 8 Ω	217.5 x 43.7 x 300 mm	TBA

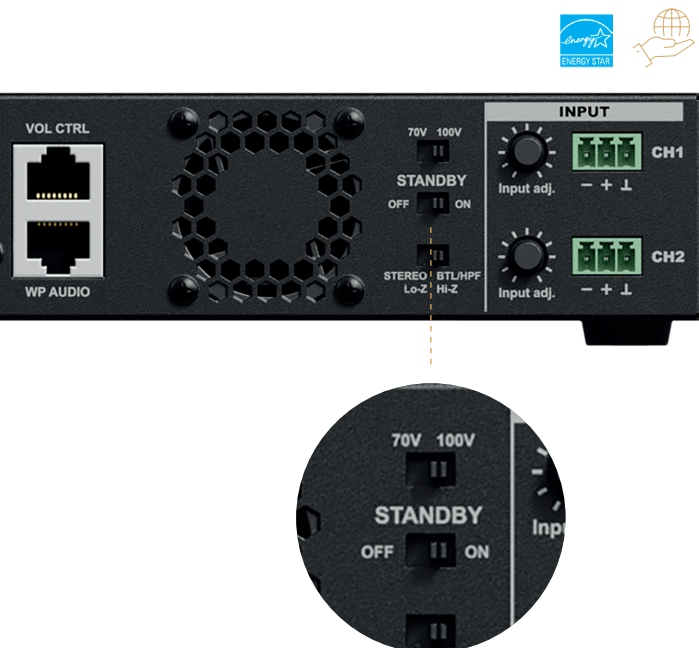


Plug-and-play compatible

These network input & output panels and volume controllers can be easily connected on the back of the SCP. A cost-effective plug & play solution to extend or introduce brand new input possibilities and control options.

Optimal cooling (passive & active)

So much power in such a small enclosure could cause some heating issues? Not at all, the SCP series are designed in a unique way so that optimal cooling is established, passive cooling on the SCP206 and SCP212 and active cooling on the SCP224, SCP230 and SCP250.



Same power, less energy

Optimal power consumption with ENERGY STAR® compliant standby-functionality, easy controllable with a switch on the back of the device. Enable or disable the 'Auto standby mode' whenever you like.

WP200

Remote volume controller



- ✓ High grade materials
- ✓ Stepless linear analogue voltage regulation
- ✓ Pluggable terminal block connection
- ✓ Compatible with a variety of AUDAC products
- ✓ Available in black & white

The WP200 is a remote volume controller which can be stepless and linear regulated over an applied voltage level, allowing volume regulation for a variety of devices. It is compatible with various products working with an analogue and linear input voltage. The front panel is finished

with high grade materials such as the hardened glass make them blend into any environment. These wall panels are compatible with standard EU style in wall boxes, making them the ideal solution for solid and hollow walls.



Stepless voltage regulation

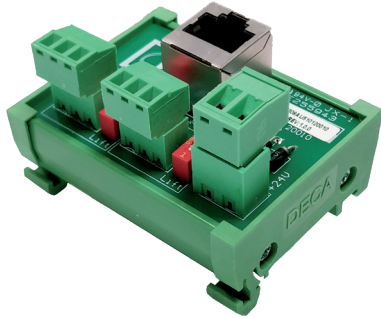
The WP200 offers seamless, precise voltage-driven linear volume control, enabling versatile use across devices. Crafted with top-tier materials like hardened glass, its sleek design effortlessly integrates into any space.

WP200	Front finish	Voltage regulation	In/output	Dimensions (W x H)	Compatible installation boxes
	Glass + ABS	Stepless linear rotary dial	Pluggable terminal block connection	80 x 80 mm	

Solid wall - [WB45S/FS](#)
 Hollow wall - [WB45S/FG](#)
 Surface mount - [WB200/Sx](#)

ARJ12P

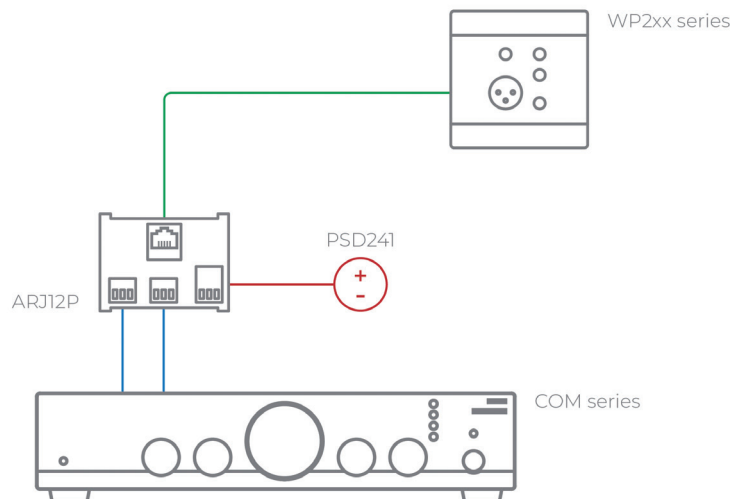
Junction box - RJ45 to 2 x 3-pin terminal block



The ARJ12P is a junction box for connecting peripheral devices to a standard line input. It enables signal transfer over long distances over a twisted cable. With its ability to transmit signals over long distances through a twisted cable, the ARJ12P offers reliable and high-quality performance for various applications. The junction box can be used in both ways, either audio signal can be sent through or received from the RJ45 bus connector.

Because the ARJ12P is a passive junction box, the maximum cable run length is dependent on the following factors: connected input, cable type (shielded or unshielded, CAT rating, etc.), and installation location (next to power cabling, dimmers, etc.). The unbreakable plastic housing allows easy mounting on Mini DIN rails.

An example setup with ARJ12P below:





Matrix Systems

With innovation at the base of AUDAC's development, the brand offers comprehensive, expandable and powerful solutions for almost every situation.



Amplifiers

AUDAC offers a wide range of digital multi-channel amplifiers for single and multi-zone systems.



Modular audio system

AUDAC pays great attention to its multimedia sources. The development of cutting edge digital audio technology has led to a complete range of sources that will inspire you!



Microphones

From the most robust hand-held or headset microphones to advanced paging systems, AUDAC provides you with the right extension for your voice.



Wall loudspeakers

The perfect match for fixed audio installations in modern environments, AUDAC offers different sizes of elegantly designed loudspeaker solutions.



In-wall / In-ceiling loudspeakers

Exceptional sound quality and value for a wide variation of applications. The extensive range of flush mount loudspeakers exists out of 5 different series that are complementary to one another.



Complete audio solutions

AUDAC offers a wide range of custom audio solutions. Pre-assembled loudspeakers packages specially and acoustically designed for each project.

Looking for advice or a custom solution?

New products 2024



 info@audac.eu

 facebook.com/audacaudio

 x.com/audacaudio

 youtube.com/user/audacaudio